

P Series Through Hole PLCC Socket

Features



- Applications Include All Electronic PC Boards Requiring the Conversion of a .050" Pitch Chip Carrier to a .100" x .100" Grid Through Board Application
- Accepts Molded Plastic Chip Carriers Conforming to JEDEC Specification MO-047 for Square and MO-052 for Rectangular Configuration
- Visual and Mechanical Polarization for PLCC Insertion
- Closed Bottom for Excellent Protection from Solder Wicking Into Contact Area
- Molded-In Stand-Offs Allow Easy Removal of Flux Residue
- Extraction Tool Slots*
- Open Top Design for Cooler Running Chip Carrier
- Automatic Insertion Machine Compatible
- CSA/NRTL Certified File No. LR78160

Performance Specifications

Materials and Finish

Body

LCC: PBT Thermoplastic, 30% Glass Filled, 
UL94V-0 Rated, Black Color

LCC-1: PPS Thermoplastic, 40% Glass Filled,
UL94V-0 Rated, Brown Color

Contact Material

Phosphor Bronze

Contact Finish

Copper Alloy, Tin Plated

Electrical Characteristics

Contact Current Rating: 1 Amp

Contact Resistance: 30 Milliohms Max.

Dielectric Withstanding Voltage: 500V AC Min. for 1 Minute

Insulation Resistance: 1000 Megohms Min.

Temperature Rating: -55°C to +105°C

* PLCC Extraction Tool P/N TLP-PLCC

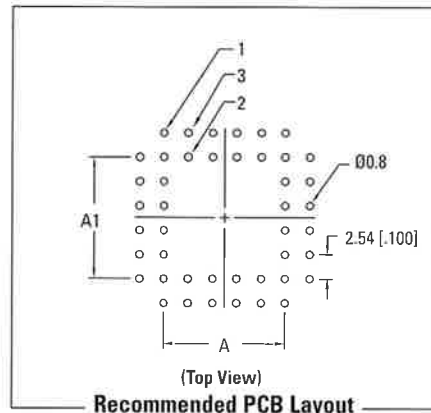
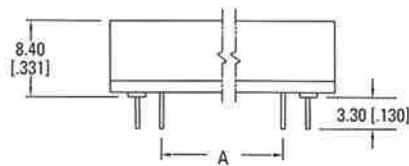
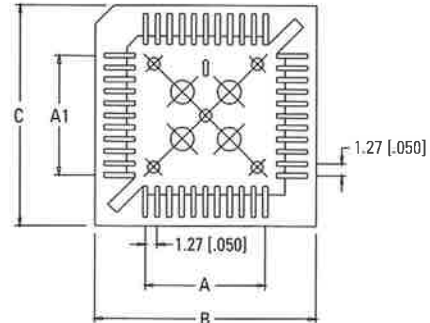
CHIP CARRIER SOCKETS

P Series

Ordering Information

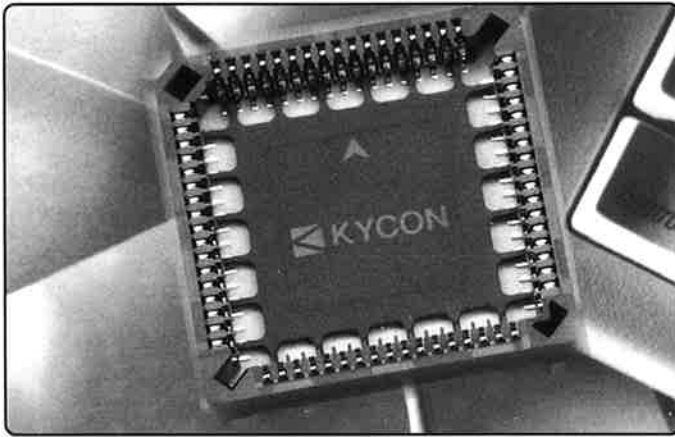
P	44	LCC
Series	Number of Contacts	LCC: PBT LCC-1: PPS

Dimensions



Dimensions in mm [In]

Number of Contacts	A ±0.1	A1 ±0.1	B ±0.2	C ±0.2
20	5.08	5.08	15.56	15.56
28	7.62	7.62	17.78	17.78
32	7.62	10.16	18.10	20.64
44	12.70	12.70	23.58	23.58
52	15.24	15.24	25.72	25.72
68 - PBT	20.32	20.32	31.80	31.80
68 - PPS	20.32	20.32	31.10	31.10
84 - PBT	25.40	25.40	36.70	36.70
84 - PPS	25.40	25.40	36.00	36.00




SMP Series Slim Design Surface Mount PLCC Socket

Features

- Applications Include All Electronic PC Boards Requiring Use of a Socket with Same Footprints as Most Common Plastic Leaded Chip Carriers
- Accepts Molded Plastic Chip Carriers Conforming to JEDEC Specification MO-047 for Square and MO-052 for Rectangular Configuration
- Visual and Mechanical Polarization for PLCC Insertion
- Open Frame Design for Ease of Contact Inspection and Repair
- Optional PCB Polarizing Pegs Available
- Slimmer Design Saves on Board Space
- Extraction Tool Slots*
- Open Top Design for Cooler Running Chip Carrier
- Automatic Insertion Machine Compatible
- CSA/NRTL Certified File No. LR78160

Performance Specifications

Materials

Body
PPS Thermoplastic, UL94V-0 Rated, Brown Color 

Contact Material

Phosphor Bronze

Contact Finish

Tin Over Nickel Plating

Electrical Characteristics

Contact Current Rating: 1 Amp

Contact Resistance: 15 Milliohms Max.

Dielectric Withstanding Voltage: 1000 V AC Min. for 1 Minute

Insulation Resistance: 1000 Megohms Min.

Operating Temperature: -55°C to +105°C

*PLCC Extraction Tool P/N TLP-PLCC

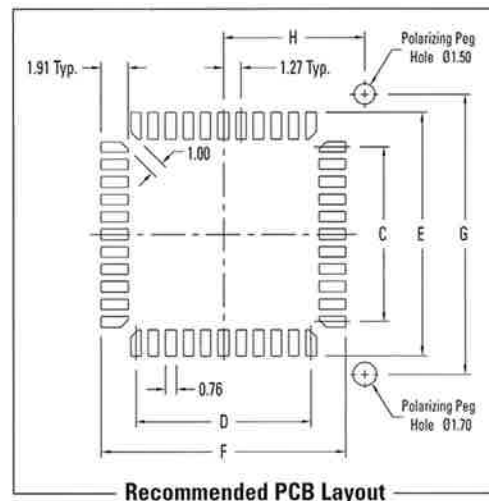
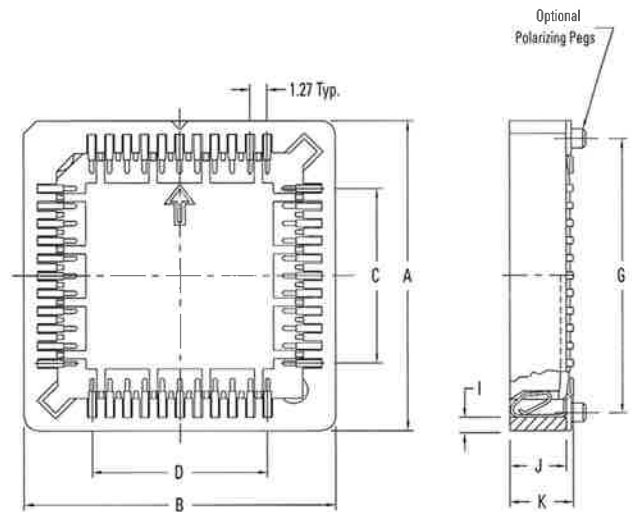


CHIP CARRIER SOCKETS

SMP Series

Ordering Information

SMP	68	LCC2	N	
Series	Number of Contacts	N: Non Polarized P: Polarized		Packaging Blank: Tubes TR: Tape and Reel



Dimensions in mm

No. of Cont.	A	B	C	D	E	F	G	H	I	J	K
20	14.86	14.86	5.08	5.08	10.03	10.03	12.70	6.35	0.94	4.10	4.60
28	17.40	17.40	7.62	7.62	12.57	12.57	15.24	7.62	0.95	4.10	4.60
32	19.45	16.90	10.16	7.62	15.11	12.57	17.78	7.62	0.70	3.83	4.27
44	22.48	22.48	12.70	12.70	17.65	17.65	20.32	10.16	0.95	4.10	4.60
52	25.40	25.40	15.24	15.24	20.19	20.19	22.86	11.43	1.10	4.10	4.60
68	30.54	30.54	20.32	20.32	25.27	25.27	27.94	13.97	1.17	4.10	4.60
84	35.56	35.56	25.40	25.40	30.35	30.35	33.02	16.15	1.12	4.10	4.60